

Original MC4

Renewable Energy | Solar Photovoltaics

EN



Female and male cable coupler MC4

As individual part with open crimp contact (including insulating part)



Female cable coupler PV-KBT4...



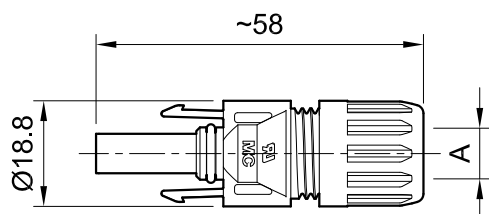
Male cable coupler PV-KST4...

- In accordance with NEC 2023, requires a tool to open.
- Proven MULTILAM technology with high long-term stability, which ensures consistently low performance loss throughout the entire service life of the plug connector.
- Tried and tested plug connectors, over 15 years of experience in the field.
- Available for assembly with cross-sections up to 10 mm².
- Also available as ready made leads according to customer's specification.
- To be used with suitable mated connectors from the MC4 product family and suitable cable.

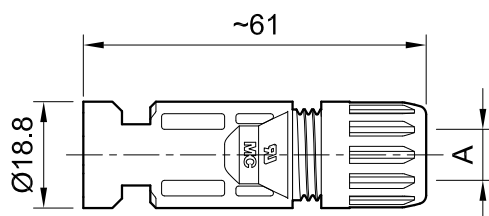
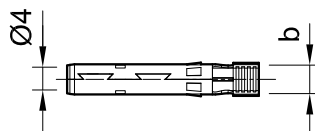
Technical data

| Technical data | |
|--|--------------------------|
| Ambient temperature range | -40 °C...+85 °C (TÜV/UL) |
| Upper limiting temperature | 105 °C |
| Degree of protection | IP68 (1 m, 168 h)/IP65 |
| Degree of protection, unmated | IP2X |
| Degree of pollution | 3 |
| Max. contact resistance of the connector | 0.25 mΩ |
| Rated Impulse Voltage | 16 kV |
| Contact system | MULTILAM |
| Type of connection | Crimping |
| Contact material | Copper, tin plated |
| Insulation material | PC/PA |
| Locking system | Locking Type |
| Fire protection class | UL94:V-0 |
| Ammonia resistance (acc. to DLG) | yes |
| Salt mist spray test, degree of severity 6 | yes |
| TÜV Rheinland certifications number | R 60127190 |
| TÜV Rheinland 2 PFG 2330 | R 60087448 |
| UL-File number | E343181 |
| CSA number of certificate | 250725 |
| CQC number of certificate | CQC20024256431 |
| JET number of certificate | B19T0013 |

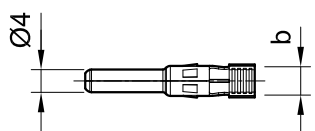
Dimensional drawings



Female cable coupler PV-KBT4...



Male cable coupler PV-KST4...



Ordering information

| Order No. | Type | Socket | Plug | Outer diameter of cable | Width of crimp opening | IEC 62852 | | | UL 6703 | | | Approvals | | | | |
|-----------------|------------------|--------|------|-------------------------|------------------------|-----------------|------|------|---------|------|----|-----------|----|-----|-----|-----|
| | | | | | | mm ² | DC V | A | AWG | DC V | A | TÜV | UR | CSA | CQC | JET |
| 32.0010P0001-UR | PV-KBT4/2,5I-UR | x | | 5.0 – 6.0 | 4.0 | 2.5 | 1000 | 22.5 | | | | x | x | x | | x |
| | | | | | | | | | 14 | 1500 | 30 | | | | | |
| 32.0011P0001-UR | PV-KST4/2,5I-UR | | x | 5.0 – 6.0 | 4.0 | 2.5 | 1000 | 22.5 | | | | x | x | x | | x |
| | | | | | | | | | 14 | 1500 | 30 | | | | | |
| 32.0140P0001-UR | PV-KBT4/2,5X-UR | x | | 5.5 – 7.4 | 4.0 | 2.5 | 1000 | 22.5 | | | | x | x | | | x |
| | | | | | | | | | 14 | 1500 | 30 | | | | | |
| 32.0141P0001-UR | PV-KST4/2,5X-UR | | x | 5.5 – 7.4 | 4.0 | 2.5 | 1000 | 22.5 | | | | x | x | | | x |
| | | | | | | | | | 14 | 1500 | 30 | | | | | |
| 32.0012P0001-UR | PV-KBT4/2,5II-UR | x | | 5.9 – 8.8 | 4.0 | 2.5 | 1000 | 22.5 | | | | x | x | x | x | x |
| | | | | | | | | | 14 | 1500 | 30 | | | | | |
| 32.0013P0001-UR | PV-KST4/2,5II-UR | | x | 5.9 – 8.8 | 4.0 | 2.5 | 1000 | 22.5 | | | | x | x | x | x | x |
| | | | | | | | | | 14 | 1500 | 30 | | | | | |
| 32.0014P0001-UR | PV-KBT4/6I-UR | x | | 5.0 – 6.0 | 5.8 | 4 | 1000 | 39 | | | | x | x | x | | x |
| | | | | | | 6 | 1000 | 39 | | | | | | | | |
| | | | | | | | | | 12 | 1500 | 35 | | | | | |
| | | | | | | | | | 10 | 1500 | 50 | | | | | |
| 32.0015P0001-UR | PV-KST4/6I-UR | | x | 5.0 – 6.0 | 5.8 | 4 | 1000 | 39 | | | | x | x | x | | x |
| | | | | | | 6 | 1000 | 39 | | | | | | | | |
| | | | | | | | | | 12 | 1500 | 35 | | | | | |
| | | | | | | | | | 10 | 1500 | 50 | | | | | |
| 32.0142P0001-UR | PV-KBT4/6X-UR | x | | 5.5 – 7.4 | 5.8 | 4 | 1000 | 39 | | | | x | x | | | x |
| | | | | | | 6 | 1000 | 39 | | | | | | | | |
| | | | | | | | | | 12 | 1500 | 35 | | | | | |
| | | | | | | | | | 10 | 1500 | 50 | | | | | |
| 32.0143P0001-UR | PV-KST4/6X-UR | | x | 5.5 – 7.4 | 5.8 | 4 | 1000 | 39 | | | | x | x | | | x |
| | | | | | | 6 | 1000 | 39 | | | | | | | | |
| | | | | | | | | | 12 | 1500 | 35 | | | | | |
| | | | | | | | | | 10 | 1500 | 50 | | | | | |
| 32.0016P0001-UR | PV-KBT4/6II-UR | x | | 5.9 – 8.8 | 5.8 | 4 | 1000 | 39 | | | | x | x | x | x | x |
| | | | | | | 6 | 1000 | 39 | | | | | | | | |
| | | | | | | | | | 12 | 1500 | 35 | | | | | |
| | | | | | | | | | 10 | 1500 | 50 | | | | | |

| Order No. | Type | Socket | Plug | Outer diameter of cable | Width of crimp opening | IEC 62852 | | | UL 6703 | | | Approvals | | | | |
|-----------------|----------------|--------|------|-------------------------|------------------------|-----------------|------|----|---------|------|----|-----------|----|-----|-----|-----|
| | | | | | | mm ² | DC V | A | AWG | DC V | A | TÜV | UR | CSA | CQC | JET |
| 32.0017P0001-UR | PV-KST4/6II-UR | | x | 5.9 – 8.8 | 5.8 | 4 | 1000 | 39 | | | | x | x | x | x | x |
| | | | | | | 6 | 1000 | 39 | | | | | | | | |
| | | | | | | | | | 12 | 1500 | 35 | | | | | |
| | | | | | | | | 10 | 1500 | 50 | | | | | | |
| 32.0034P0001 | PV-KBT4/10II | x | | 5.9 – 8.8 | 6.5 | 10 | 1000 | 45 | | | | x | | | | x |
| 32.0035P0001 | PV-KST4/10II | | x | 5.9 – 8.8 | 6.5 | 10 | 1000 | 45 | | | | x | | | | x |

Note:

For more detailed information concerning the suitable cable gland range, please consult corresponding assembly instructions (see “Further information”).

Note:

Unmated connectors must be protected from any contamination using Stäubli sealing caps. For ordering information concerning Stäubli sealing caps, please consult corresponding catalog (see “Further information”).

Further information



Female and male cable coupler with barrel crimp contacts

For cable coupler with barrel crimp contacts, please consult:
www.staubli.com/re-downloads.html → English → Catalog → **Cable coupler with barrel crimp contacts**



Tools and accessories

For related Stäubli tools and accessories please consult:
www.staubli.com/re-downloads.html → English → Catalog → **Tools and accessories**



Assembly instructions

For assembly instructions for “Female and male cable coupler MC4” please consult:
www.staubli.com/re-downloads.html → English → Assembly info → **MA231**

Female and male cable coupler MC4

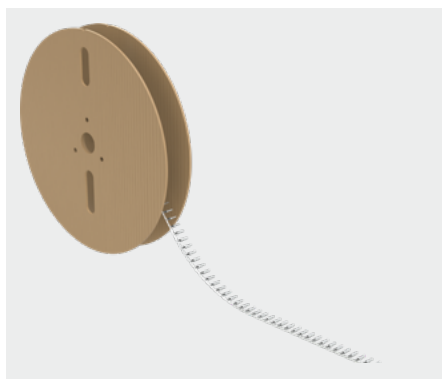
Open crimp contacts on carrier band (including insulating part)



Female cable coupler PV-KBT4...



Male cable coupler PV-KST4...



Reel with contacts

- In accordance with NEC 2023, requires a tool to open.
- Proven MULTILAM technology with high long-term stability, which ensures consistently low performance loss throughout the entire service life of the plug connector.
- Tried and tested plug connectors, over 15 years of experience in the field.
- Available for assembly with cross-sections up to 10 mm².
- To be used with suitable mated connectors from the MC4 product family and suitable cable.
- Also available as ready made leads according to customer's specification.

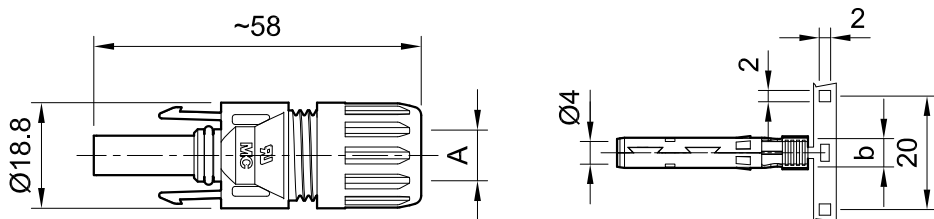
Technical data

| Technical data | |
|--|--------------------------|
| Ambient temperature range | -40 °C...+85 °C (TÜV/UL) |
| Upper limiting temperature | 105 °C |
| Degree of protection | IP68 (1 m, 168 h)/IP65 |
| Degree of protection, unmated | IP2X |
| Degree of pollution | 3 |
| Max. contact resistance of the connector | 0.25 mΩ |
| Rated Impulse Voltage | 16 kV |
| Contact system | MULTILAM |
| Type of connection | Crimping |
| Contact material | Copper, tin plated |
| Insulation material | PC/PA |
| Locking system | Locking Type |

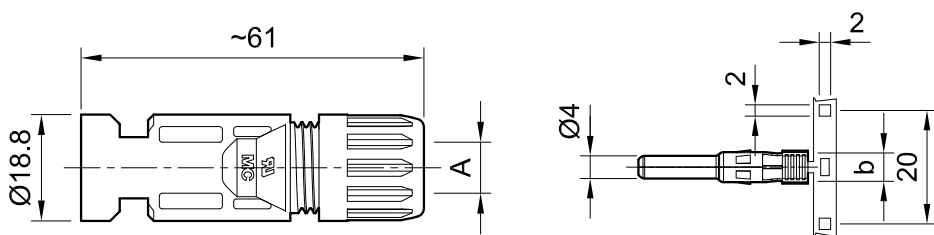
Technical data

| | |
|--|----------------|
| Fire protection class | UL94:V-0 |
| Ammonia resistance (acc. to DLG) | yes |
| Salt mist spray test, degree of severity 6 | yes |
| TÜV Rheinland certifications number | R 60127190 |
| TÜV Rheinland 2 PFG 2330 | R 60087448 |
| UL-File number | E343181 |
| CSA number of certificate | 250725 |
| CQC number of certificate | CQC20024256431 |
| JET number of certificate | B19T0013 |

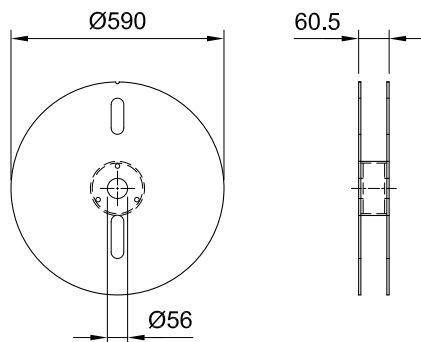
Dimensional drawings



Female cable coupler PV-KBT4...



Male cable coupler PV-KST4...



Reel with contacts

Ordering information

| Order No. | Type | Socket | Plug | Outer diameter of cable | Width of crimp opening | IEC 62852 | | | UL 6703 | | | Contacts per reel | Approvals | | | | | |
|-----------------|------------------|--------|------|-------------------------|------------------------|-----------------|------|------|---------|------|----|-------------------|-----------|----|-----|-----|-----|---|
| | | | | | | mm ² | DC V | A | AWG | DC V | A | | TÜV | UR | CSA | CQC | JET | |
| | | | | A (mm) | b (mm) | | | | | | | | | | | | | |
| 32.0010P2000-UR | PV-KBT4/2,5I-UR | x | | 5.0 – 6.0 | 4.0 | 2.5 | 1000 | 22.5 | | | | 2000 | x | x | x | | | x |
| | | | | | | | | | 14 | 1500 | 30 | | | | | | | |
| 32.0011P2000-UR | PV-KST4/2,5I-UR | | x | 5.0 – 6.0 | 4.0 | 2.5 | 1000 | 22.5 | | | | 2000 | x | x | x | | | x |
| | | | | | | | | | 14 | 1500 | 30 | | | | | | | |
| 32.0140P2000-UR | PV-KBT4/2,5X-UR | x | | 5.5 – 7.4 | 4.0 | 2.5 | 1000 | 22.5 | | | | 2000 | x | x | | | | x |
| | | | | | | | | | 14 | 1500 | 30 | | | | | | | |
| 32.0141P2000-UR | PV-KST4/2,5X-UR | | x | 5.5 – 7.4 | 4.0 | 2.5 | 1000 | 22.5 | | | | 2000 | x | x | | | | x |
| | | | | | | | | | 14 | 1500 | 30 | | | | | | | |
| 32.0012P2000-UR | PV-KBT4/2,5II-UR | x | | 5.9 – 8.8 | 4.0 | 2.5 | 1000 | 22.5 | | | | 2000 | x | x | x | x | x | x |
| | | | | | | | | | 14 | 1500 | 30 | | | | | | | |
| 32.0013P2000-UR | PV-KST4/2,5II-UR | | x | 5.9 – 8.8 | 4.0 | 2.5 | 1000 | 22.5 | | | | 2000 | x | x | x | x | x | x |
| | | | | | | | | | 14 | 1500 | 30 | | | | | | | |
| 32.0014P2000-UR | PV-KBT4/6I-UR | x | | 5.0 – 6.0 | 5.8 | 4 | 1000 | 39 | | | | 2000 | x | x | x | | | x |
| | | | | | | 6 | 1000 | 39 | | | | | | | | | | |
| | | | | | | | | | 12 | 1500 | 35 | | | | | | | |
| | | | | | | | | | 10 | 1500 | 50 | | | | | | | |
| 32.0015P2000-UR | PV-KST4/6I-UR | | x | 5.0 – 6.0 | 5.8 | 4 | 1000 | 39 | | | | 2000 | x | x | x | | | x |
| | | | | | | 6 | 1000 | 39 | | | | | | | | | | |
| | | | | | | | | | 12 | 1500 | 35 | | | | | | | |
| | | | | | | | | | 10 | 1500 | 50 | | | | | | | |
| 32.0142P2000-UR | PV-KBT4/6X-UR | x | | 5.5 – 7.4 | 5.8 | 4 | 1000 | 39 | | | | 2000 | x | x | | | | x |
| | | | | | | 6 | 1000 | 39 | | | | | | | | | | |
| | | | | | | | | | 12 | 1500 | 35 | | | | | | | |
| | | | | | | | | | 10 | 1500 | 50 | | | | | | | |
| 32.0143P2000-UR | PV-KST4/6X-UR | | x | 5.5 – 7.4 | 5.8 | 4 | 1000 | 39 | | | | 2000 | x | x | | | | x |
| | | | | | | 6 | 1000 | 39 | | | | | | | | | | |
| | | | | | | | | | 12 | 1500 | 35 | | | | | | | |
| | | | | | | | | | 10 | 1500 | 50 | | | | | | | |
| 32.0016P2000-UR | PV-KBT4/6II-UR | x | | 5.9 – 8.8 | 5.8 | 4 | 1000 | 39 | | | | 2000 | x | x | x | x | x | x |
| | | | | | | 6 | 1000 | 39 | | | | | | | | | | |
| | | | | | | | | | 12 | 1500 | 35 | | | | | | | |
| | | | | | | | | | 10 | 1500 | 50 | | | | | | | |

| Order No. | Type | Socket | Plug | Outer diameter of cable | Width of crimp opening | IEC 62852 | | | UL 6703 | | | Contacts per reel | Approvals | | | | | |
|-----------------|----------------|--------|------|-------------------------|------------------------|-----------------|------|----|---------|------|----|-------------------|-----------|----|-----|-----|-----|---|
| | | | | | | mm ² | DC V | A | AWG | DC V | A | | TÜV | UR | CSA | CQC | JET | |
| 32.0017P2000-UR | PV-KST4/6II-UR | | x | 5.9 – 8.8 | 5.8 | 4 | 1000 | 39 | | | | 2000 | x | x | x | x | x | |
| | | | | | | 6 | 1000 | 39 | | | | | | | | | | |
| | | | | | | | | | 12 | 1500 | 35 | | | | | | | |
| | | | | | | | | 10 | 1500 | 50 | | | | | | | | |
| 32.0034P1500 | PV-KBT4/10II | x | | 5.9 – 8.8 | 6.5 | 10 | 1000 | 45 | | | | 1500 | x | | | | | x |
| 32.0035P1500 | PV-KST4/10II | | x | 5.9 – 8.8 | 6.5 | 10 | 1000 | 45 | | | | 1500 | x | | | | | x |

Note:

For more detailed information concerning the suitable cable gland range, please consult corresponding assembly instructions (see “Further information”).

Note:

Unmated connectors must be protected from any contamination using Stäubli sealing caps. For ordering information concerning Stäubli sealing caps, please consult corresponding catalog (see “Further information”).

Further information



Tools and accessories

For related Stäubli tools and accessories please consult:
www.staubli.com/re-downloads.html → English → Catalog → **Tools and accessories**



Assembly instructions

For assembly instructions for “Female and male cable coupler MC4” please consult:
www.staubli.com/re-downloads.html → English → Assembly info → **MA231**

Female and male panel receptacle MC4

As individual part (including insulating part)



Female panel receptacle PV-ADBP4-S2...



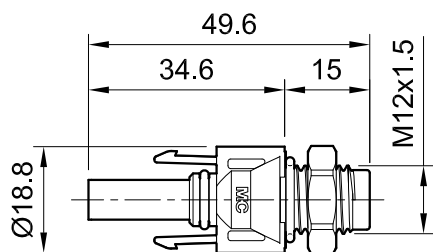
Male panel receptacle PV-ADSP4-S2...

- MC4 panel-receptacle connectors are the interface between an inverter or junction box or junction and a branch cable.
- Mounting directly by means of screw thread or in perforated plate with plastic nut (included in delivery).
- Rapid, precise plugging.
- Protection class IP66 guarantees the highest connection safety.
- To be used with suitable mated connectors from the MC4 product family and suitable cable.
- Includes sealing element for enclosure.

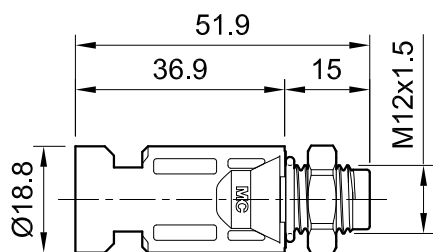
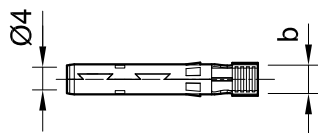
Technical data

| Technical data | |
|--|--------------------------|
| Ambient temperature range | -40 °C...+85 °C (TÜV/UL) |
| Upper limiting temperature | 105 °C |
| Degree of protection | IP66 |
| Degree of protection, unmated | IP2X |
| Degree of pollution | 3 |
| Max. contact resistance of the connector | 0.25 mΩ |
| Rated Impulse Voltage | 16 kV |
| Contact system | MULTILAM |
| Type of connection | Crimping |
| Contact material | Copper, tin plated |
| Insulation material | PC/PA |
| Locking system | Locking Type |
| Fire protection class | UL94:V-0 |
| TÜV Rheinland certifications number | R 60127181 |
| UL-File number | E343181 |
| CSA number of certificate | 250725 |

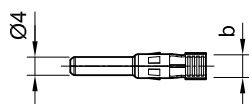
Dimensional drawings



Female panel receptacle PV-ADBP4-S2...



Male panel receptacle PV-ADSP4-S2...



Ordering information

| Order No. | Type | Socket | Plug | Width of crimp opening | IEC 62852 | | | UL 6703 | | | Approvals | | | |
|-----------------|--------------------|--------|------|------------------------|-----------|-----------------|------|---------|------|------|-----------|-----|----|-----|
| | | | | | b (mm) | mm ² | DC V | A | AWG | DC V | A | TÜV | UR | CSA |
| 32.0076P0001-UR | PV-ADBP4-S2-UR/2,5 | x | | 4.0 | 1.5 | 1250 | 17.5 | | | | | | | |
| | | | | | 2.5 | 1250 | 22.5 | | | | x | x | x | |
| | | | | | | | | 14 | 1500 | 30 | | | | |
| 32.0077P0001-UR | PV-ADSP4-S2-UR/2,5 | | x | 4.0 | 1.5 | 1250 | 17.5 | | | | | | | |
| | | | | | 2.5 | 1250 | 22.5 | | | | x | x | x | |
| | | | | | | | | 14 | 1500 | 30 | | | | |
| 32.0078P0001-UR | PV-ADBP4-S2-UR/6 | x | | 5.8 | 4 | 1250 | 39 | | | | | | | |
| | | | | | 6 | 1250 | 45 | | | | x | x | x | |
| | | | | | | | | 12 | 1500 | 35 | | | | |
| | | | | | | | | 10 | 1500 | 50 | | | | |
| 32.0079P0001-UR | PV-ADSP4-S2-UR/6 | | x | 5.8 | 4 | 1250 | 39 | | | | | | | |
| | | | | | 6 | 1250 | 45 | | | | x | x | x | |
| | | | | | | | | 12 | 1500 | 35 | | | | |
| | | | | | | | | 10 | 1500 | 50 | | | | |
| 32.0150P0001 | PV-ADBP4-S2/10 | x | | 6.5 | 10 | 1250 | 51 | | | | | x | | |
| 32.0151P0001 | PV-ADSP4-S2/10 | | x | 6.5 | 10 | 1250 | 51 | | | | | x | | |

Note:

For more detailed information concerning the suitable cable gland range, please consult corresponding assembly instructions (see “Further information”).

Note:

Unmated connectors must be protected from any contamination using Stäubli sealing caps. For ordering information concerning Stäubli sealing caps, please consult corresponding catalog (see “Further information”).

Further information



Tools and accessories

For related Stäubli tools and accessories please consult:

www.staubli.com/re-downloads.html → English → Catalog → **Tools and accessories**



Assembly instructions

For assembly instructions for “Female and male panel receptacle MC4” please consult:

www.staubli.com/re-downloads.html → English → Assembly info → **MA275**

Female and male panel receptacle MC4

As individual part (including insulating part)

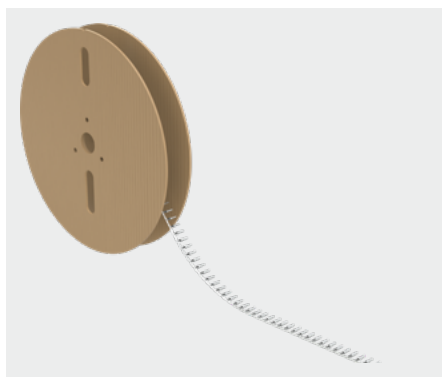


Female panel receptacle PV-ADBP4-S2...



Male panel receptacle PV-ADSP4-S2...

- MC4 panel-receptacle connectors are the interface between an inverter or junction box or junction and a branch cable.
- Mounting directly by means of screw thread or in perforated plate with plastic nut (included in delivery).
- Rapid, precise plugging. Protection class IP66 guarantees the highest connection safety.
- To be used with suitable mated connectors from the MC4 product family and suitable cable.
- Includes sealing element for enclosure.



Reel with contacts

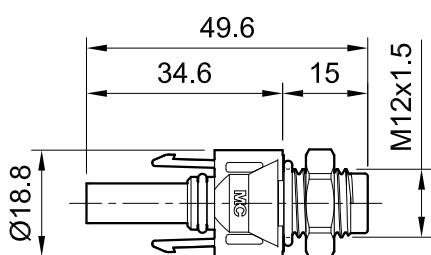
Technical data

| Technical data | |
|--|--------------------|
| Ambient temperature range | -40 °C...+85 °C |
| Upper limiting temperature | 105 °C |
| Degree of protection | IP66 |
| Degree of protection, unmated | IP2X |
| Degree of pollution | 3 |
| Max. contact resistance of the connector | 0.25 mΩ |
| Rated Impulse Voltage | 16 kV |
| Contact system | MULTILAM |
| Type of connection | Crimping |
| Contact material | Copper, tin plated |
| Insulation material | PC/PA |

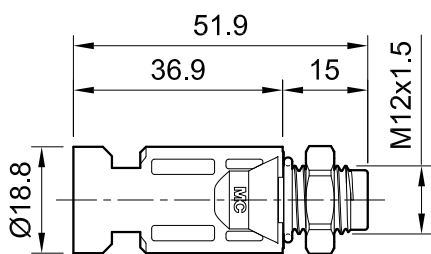
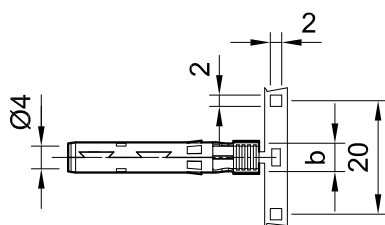
Technical data

| | |
|-------------------------------------|--------------|
| Locking system | Locking Type |
| Fire protection class | UL94:V-0 |
| TÜV Rheinland certifications number | R 60127181 |
| UL-File number | E343181 |
| CSA number of certificate | 250725 |

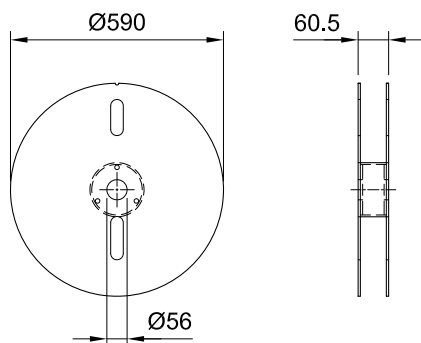
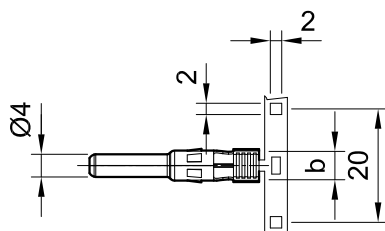
Dimensional drawings



Female panel receptacle PV-ADBP4-S2...



Male panel receptacle PV-ADSP4-S2...



Reel with contacts

Ordering information

| Order No. | Type | Socket | Plug | Width of crimp opening | IEC 62852 | | | UL 6703 | | | Contacts per reel | Approvals | | |
|-----------------|--------------------|--------|------|------------------------|-----------------|------|------|---------|------|----|-------------------|-----------|----|-----|
| | | | | | mm ² | DC V | A | AWG | DC V | A | | TÜV | UR | CSA |
| 32.0076P2000-UR | PV-ADBP4-S2-UR/2,5 | x | | 4.0 | 1.5 | 1250 | 17.5 | | | | 2000 | x | x | x |
| | | | | | 2.5 | 1250 | 22.5 | | | | | | | |
| | | | | | | | | 14 | 1500 | 30 | | | | |
| 32.0077P2000-UR | PV-ADSP4-S2-UR/2,5 | | x | 4.0 | 1.5 | 1250 | 17.5 | | | | 2000 | x | x | x |
| | | | | | 2.5 | 1250 | 22.5 | | | | | | | |
| | | | | | | | | 14 | 1500 | 30 | | | | |
| 32.0078P2000-UR | PV-ADBP4-S2-UR/6 | x | | 5.8 | 4 | 1250 | 39 | | | | 2000 | x | x | x |
| | | | | | 6 | 1250 | 45 | | | | | | | |
| | | | | | | | | 12 | 1500 | 35 | | | | |
| | | | | | | | | 10 | 1500 | 50 | | | | |
| 32.0079P2000-UR | PV-ADSP4-S2-UR/6 | | x | 5.8 | 4 | 1250 | 39 | | | | 2000 | x | x | x |
| | | | | | 6 | 1250 | 45 | | | | | | | |
| | | | | | | | | 12 | 1500 | 35 | | | | |
| | | | | | | | | 10 | 1500 | 50 | | | | |
| 32.0150P1500 | PV-ADBP4-S2/10 | x | | 6.5 | 10 | 1250 | 51 | | | | 1500 | x | | |
| 32.0151P1500 | PV-ADSP4-S2/10 | | x | 6.5 | 10 | 1250 | 51 | | | | 1500 | x | | |

Further information



Tools and accessories

For related Stäubli tools and accessories please consult:

www.staubli.com/re-downloads.html → English → Catalog → **Tools and accessories**



Assembly instructions

For assembly instructions for “Female and male panel receptacle MC4” please consult:

www.staubli.com/re-downloads.html → English → Assembly info → **MA275**



● Stäubli Units ○ Representatives/Agents

Global presence of the Stäubli Group

www.staubli.com